



St Anne's Weekly Newsletter

Friday 24th April 2026



Mission Statement


At St. Anne's, we aim to be a caring, Christian school, within the community, where everyone is respected and valued.

To be a school where all individuals are encouraged to build on their strengths and aspire to be the best they can.

Vision

Our vision has the promise by Jesus of '**life in all its fullness**' at its heart. At St Anne's, we believe:

- in our children and each other,
- we are uniquely created in the image of God,
- we were made to be awesome,
- that together we are family,
- we were created to live in community,
- in equipping the St Anne's family to be the best we can be,
- in our individual talents and abilities, and
- we can make a difference.



**'... let your light
Shine** before others,
that they may see your
good deeds and glorify
your Father in heaven.'

Matthew 5:16

'I thank you
because I am
awesomely
made...'

Psalm 139:14

'...I come that
they may have
life, and have it
to the full.'

John 10:10

Our Values

At **St Anne's CE Primary School** the following core values underpin all that we do. They are reflected in the daily life of the school and our relationships with others.

- Respect
- Thankfulness
- Hope
- Forgiveness
- Love
- Faithfulness

[Mrs Webb's Updates](#)

As we come to the end of another busy and productive week, I share some whole school updates.

It has been a wonderfully sunny week and children have loved being outdoors!

On Tuesday, we were pleased to welcome our school advisor, who spent the morning with us meeting with our Senior Leadership Team and visiting every classroom. It was a valuable opportunity to showcase the strengths of our school, and we are grateful for the thoughtful feedback and guidance provided. The visit has given us clear and practical ways to continue improving even further, ensuring the best possible outcomes for all our pupils.

Our weekly staff rumble focused on the implementation of our maths curriculum. Staff explored how we can make the most effective use of manipulatives to support understanding, while also ensuring that maths is an enjoyable and engaging experience for all children. It was encouraging to see such enthusiasm and commitment to continually refining our practice.

Year 6 have had a particularly full week. Some pupils attended an orienteering event, where they demonstrated excellent teamwork and resilience. In addition, they welcomed visitors from Vision, who worked with them on emotional wellbeing and managing exam stress ahead of their upcoming SATs. We are proud of how maturely they are approaching this important time.

Year 6 worked especially hard on Wednesday afternoon helping to reset our forest school area. See them in action here: <https://www.facebook.com/share/v/1HwyzkVMMH/>

Year 4 enjoyed their Forest School session this week, making the most of our outdoor environment to develop confidence, independence and a love of learning beyond the classroom.

On Thursday this week, it was St. George's day. At St Anne's, we recognise St. George's Day as an opportunity to reflect on England's traditions and the importance of British values. As a school, we continue to uphold values such as respect, tolerance, democracy, and the rule of law in all aspects of school life. We are committed to fostering a community where everyone feels valued and these principles are demonstrated every day.

Also on Thursday, our year 6 orienteering team took part in the annual competition and came 2nd! What an achievement out of all the school in Rossendale. This was run by Pendle Forest Orienteering, and they asked if anyone was interested they would be happy to help children join this club. <https://www.pfo.org.uk/>

Next week, our key stage 2 children will all spend one of their lunchtime plays on the meadow and KS1 site. This will give them the chance to see the new play spaces and play with our younger children.

Our OPAL play team have met this week to redesign play spaces and check in with pupils about play rules, equipment and to hear their voice. It is awesome to be Platinum OPAL school! A summer festival is being planned to fundraise for OPAL which will be on Friday 5th June 2026 in our forest school area. More detail to follow.



As we reflect on the week, the bible reminds us of this verse:

“Let us not become weary in doing good, for at the proper time we will reap a harvest if we do not give up.” (Galatians 6:9)



This verse encourages us to keep going, even when things feel challenging. Progress and improvement often take time, but through perseverance and effort, we will see the rewards. This is a message we continue to share with our children as they grow and learn.

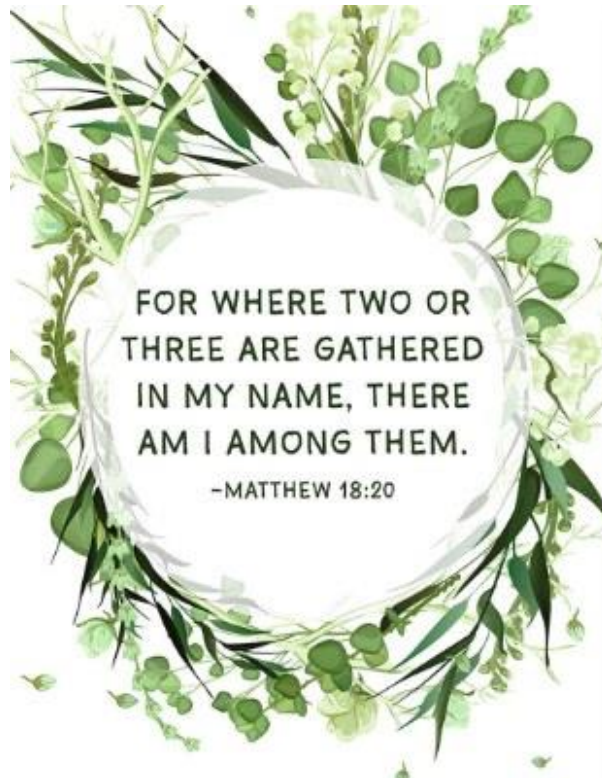
Thank you for your patience and adaptability this week on our EYFS and KS1 site whilst the new surfacing has been completed. The whole project is nearing completion, and we are looking forward to welcoming you for a stay n play.

Have a lovely weekend,

Mrs J Webb

Headteacher

Collective Worship



This week we enjoyed a rich variety of collective worship and assemblies, each offering pupils valuable opportunities for reflection, learning and celebration.

On Monday, Mrs Webb led our collective worship, exploring the question “How many times should we forgive?” Pupils heard the story of Peter asking Jesus how many times we should forgive. Pupils reflected thoughtfully on the importance of forgiveness, kindness and showing understanding towards others.

On Tuesday, we welcomed Cookstars, who delivered an engaging assembly focused on food, cooking and healthy choices. The session sparked lots of interest and enthusiasm among the children. Cookstars deliver a weekly club after school on a Tuesday which children are welcome to attend.

On Wednesday, our “Open the Book” team shared a Bible story in their usual interactive and engaging way, helping bring important messages to life for our pupils.

Thursday's assembly focused on OPAL (Outdoor Play and Learning), reminding children of the importance of play, teamwork and making the most of our outdoor environment and play equipment.

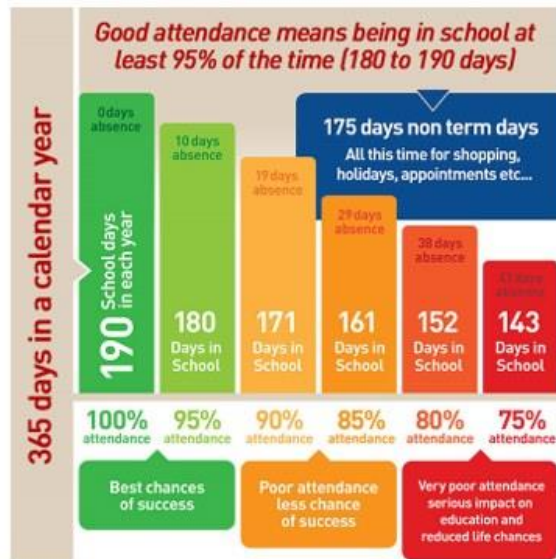
Finally, on Friday, we came together for our celebration assembly, recognising pupils' achievements and successes from across the week.

It has been wonderful to see such a wide range of experiences enriching our pupils' spiritual, moral and social development.

Attendance and Punctuality

Good attendance and punctuality are essential for children's learning, wellbeing and future success. Every day in school counts, and even small amounts of absence can affect progress. Arriving on time is equally important, as late arrival can mean children miss key learning and socials settling at the start of the day.

Thank you for your continued support in ensuring children are in school regularly.



DID YOU KNOW? A two week holiday in term time means that the highest attendance you can achieve is **94.7%**



DID YOU KNOW? If you are 15 minutes late each day you will have missed a full 2 weeks of school in one year?

Reception 96%

Year 1 99.2%

Year 2 96%

Year 3 92.4%

Year 4 99.1%

Year 5 94.6%

Year 6 95%

Whole School 96%

CHAMPIONS



On Wednesday, our Year 5/6 children took part in the Panathlon at Blackpool Sports Hall, proudly representing Rossendale after winning the Rossendale Panathlon.

The team did Rossendale proud! Not only did the children thoroughly enjoy their day, but they also went on to win the entire competition. Starting out alongside 98 schools, with 11 competing in today's final from across Lancashire, St Anne's was the last school standing an incredible accomplishment.

The children were absolutely ecstatic and full of pride in what they had achieved.

A special thank you to Rossendale Schools organiser, Nathan Bibby, for his support throughout the day.

We are now delighted to announce that they will go on to represent Lancashire in the North West finals this June. We wish them the very best of luck!

Thank you to Coach Liam and Mr Goldsworthy for cheering them on all day and transporting



Grand Opening

We are thrilled to announce the grand opening of our brand new school building on Friday 12th June at 2:30pm — and our wider school family is warmly invited to join us! This is a special moment for our school family. This project has been a long time coming, and we are incredibly proud to finally open an educational space that will benefit our children for years to come. It represents the support and shared vision of our whole community.



Thank You



A huge thank you to our parents and carers for being so flexible and understanding this week with drop off and picks up. It is much appreciated, and the whole project is almost complete.

Thank you!

Calling All Local Bands & Musicians!



We're getting excited for our upcoming School Festival on **Friday 5th June from 5pm** onwards — and we're looking for talented performers to help make it a fantastic evening!

If you're a band or musician who would be happy to perform a 30–60 minute set, we'd love to hear from you.

This is a great opportunity to showcase your talent and be part of a fun, community-focused event.

Interested? Please get in touch with our front office for more details.

Let's make it a night to remember!

National Tests



Over the coming weeks, children in Year 1, Year 4 and Year 6 will be taking part in their statutory assessments.

Week beginning Monday 11th May: Year 6 SATs

Week beginning Monday 8th June 2026: Year 4 Multiplication Tables Check and Year 1 Phonics Screening Check

Parent leaflets with further information are attached below.

<https://www.gov.uk/.../phonics-screening-check-2024...>

<https://www.gov.uk/.../multiplication-tables-check...>

<https://www.gov.uk/.../2025-key-stage-2-national...>

More detailed information has also been sent via ParentMail.

Parking

St Anne's expects that pupils can arrive and leave school safely without the danger of an accident due to car parking.

To help keep our pupils safe, please can I politely ask you:

- not to park on the yellow safety lines around school,
- not to turn around in the road and reverse near pavements,
- not to park on the pavements near school where children are walking
- not to double park near the pull in laybys or in the middle of the road

This week in photographs

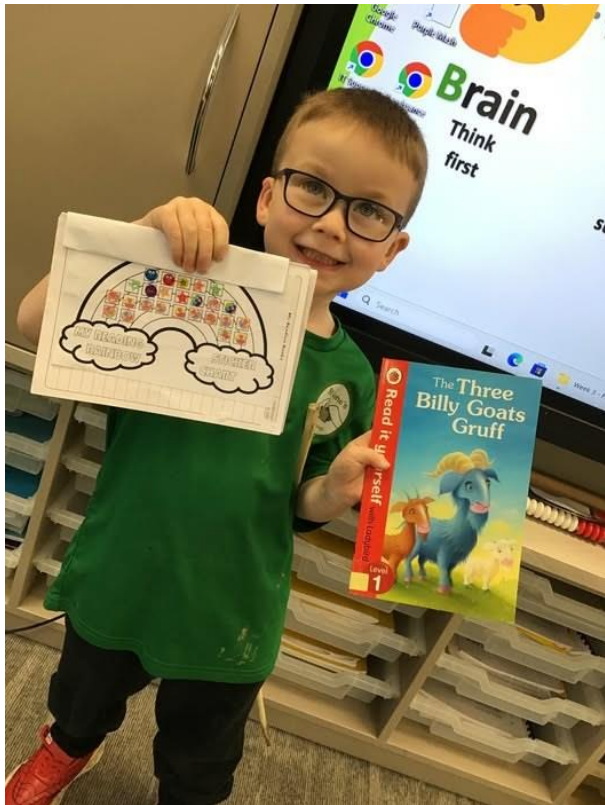


















Friends of St Anne's



Friends of St Anne's



Friends is a friendly group of parents and staff who meet regularly to plan events for our children to raise funds. The funds help to enhance the school curriculum. We believe extra experiences enrich our children's experiences throughout their time at St Anne's and give them lifelong memories.

Some examples of the events we hold are: discos, Christmas and summer fairs, quiz nights, raffles.

Friday 22nd May Non Uniform Day in exchange for bottles and fancy good

Friday 5th June Non Uniform Day in exchange for chocolate

School Nurse Drop In

Our school nurse is here in school on Tuesday 28th April from 8:30am. All parents/carers are welcome to drop in via our main school entrance.

NHS Lancashire Health Visiting and School Nursing

School Health Drop-In

Lancs 0-19 Service



Your School Nursing Team can support with the following:

- Healthy Living/Lifestyles
- Bladder and Bowel Support
- Low Level Emotional Wellbeing
- Weight Management
- Diet/Fussy Eating
- Sleep and bedtime routine

How can I access the School Nursing Service?

Qualified
Our Nurses are all Trained Registered Nurses. Follow up after the appointment, maybe provided by our Healthy Family Support Workers.

Confidential
Your Contact with the School Health Team will be delivered in a confidential room on a one-to-one basis.

Non-Judgemental
We provide a non-judgemental approach. Please do not hesitate to ask questions regarding your child's health. Please note we cannot prescribe or diagnose a health condition.

Health Prevention
We are here to help with your child/children's Health, if we are unable to provide support, we will find the appropriate support/service.

Email: ycl.019.singlepointofaccess2@nhs.net
 Website: www.lancschildandfamily.co.uk
 Telephone: 0300 247 0040
 Our service is available Monday – Friday between the hours 0900 - 1700

Community and Family Information


<https://stannesceprimary.school/early-help-offer/>

NHS Lancashire & South Cumbria NHS Foundation Trust

East Lancashire Young People's Mental Health

**Concerned about your Mental Health?
Are you under 18 or concerned about someone under 18?**

Advice sessions are available on-line via 'Attend Anywhere'
 Delivered by CYPMH East
tinyurl.com/ELCAS-LSCFT



Enter the word "CYPMH East" as the first name and "drop in" as the second name followed by your date of birth.
 You will then enter our virtual waiting area where we will collect you.

Wednesday 4 th March 2026	1pm – 3pm
Wednesday 11 th March 2026	3pm – 5pm
Wednesday 18 th March 2026	5pm – 7pm
Wednesday 25 th March 2026	1pm – 3pm



ROSENDALE
SPORT, PHYSICAL
ACTIVITY AND WELLBEING
FESTIVAL 2026

MARL PITS
SATURDAY 2ND MAY 2026
10AM - 2PM

RUGBY UNION 10-2 YOGA 1-2
GUIDED WALK 12-1 AMERICAN FOOTBALL 11-1
FOOTBALL 3V3 1-2 DISABILITY EVENTS 10-2
TRIATHLON 8-11

BUCKS
ROSENDALE R.U.F.C.
SENDATE leisure trust
ROSENDALE TRIATHLON CLUB
yoga
RAMBLERS WELLBEING WALKS
ROSENDALE BOROUGH COUNCIL
arc.

Weekly Awards



Class Captains: Lucas, Rocco, Lucas, Leo, Poppie, Briar Rose, Luke

Top Table: Iyla, Rocco, AJ, Freddie, Elliot, Leo, Charlie Mai

OPAL positive play: Isaac, Leighton

Breakfast Club: Luna

After School Club: Isla

Accelerated Reader Millionaire Reader

Henry B

Housepoints



House of Loyalty 1785

House of Courage 1520

House of Trust 1500

House of Bravery 1820



Diary dates



- Monday 4th May bank Holiday-School closed
- Monday 11th May - Thursday 14th May Year 6 SATS week
- Tuesday 12th May Governor Committee Meetings - Standards and Resources
- Tuesday 19th May Whole School Photograph
- Tuesday 19th May School Nurse Drop In from 2pm
- **Friday 22nd May School Closes for the half term break**
- **Wednesday 3rd June School reopens**
- Monday 8th June- Year 1 Phonics screening check and Year Multiplication Check
- Tuesday 9th and 10th June Life Education van Visit
- Thursday 18th June EYFS Educational Visit
- Thursday 18th June Year 5 and ^ Visit to Vision @ Woodlea Emotional wellbeing Session
- Tuesday 23rd June Year 3/4 visit to Bewilderwood-arrive at school @ 8:20am
- Thursday 25th June Relationships and Sex Education sessions for years 4, 5 and 6
- Monday 29th June Year 6 Diocesan Leavers' service at Manchester Cathedral

- Wednesday 1st July 2026 - Friday 3rd July 1026 Year 6 residential to Hothersall lodge
- Tuesday 7th and 8th July Wimbledon Visit
- Thursday 9th July Year 5 visit to Cadbury World
- Tuesday 14th July @ 2:00pm summer term music concert in church- TBC
- Friday 17th July @ 2:00pm Year 6 Leavers' service in church
- **Friday 17th July 2026 School closes for the summer break**

Term dates for 2026-2027 can be found on our website and have been sent via Parent Mail.

<https://stannesceprimary.school/school-holidays/>

St Anne's Church

Welcome to St Anne's Church Edgeside



St Anne's Church is made up of an active group of people who love God and want to serve our Community. Our services are modern and informal and we love to get everyone involved. All ages have a part to play at **St Anne's Church** and there are groups and activities for everyone, and because Church is not just about Sunday, there are lots of activities going on throughout the week. *Why not join us and get involved?*

<https://stannedgeside.co.uk/>

Contact Us



There are various ways you can contact us in school and keep up to date with school life.

- Please use our school email address office@st-anne-edgeside.lancs.sch.uk

- You can call us on: 01706 214081. Please note that calls are recorded for training and monitoring purposes.
- Speak to your child's class teacher at drop off or hand over times.
- Our school Facebook page has events and photographs of our children:
<https://www.facebook.com/stannescofeprimaryschool>
- And please visit our school website for more information about our school:
<https://stannesceprimary.school/>