



# St Anne's Weekly Newsletter

## **Mission Statement**

At St. Anne's, we aim to be a caring, Christian school, within the community, where everyone is respected and valued.

To be a school where all individuals are encouraged to build on their strengths and aspire to be the best they can.

**Friday 9th February 2024**

## **This week's news:**


- **Attendance and punctuality**
- **Parking**
- **Forest School Dates**
- **The week in photographs**
- **Ash Wednesday**
- **Church News and events**
- **Friends of St Anne's**
- **Weekly Awards**

- **House points**
- **Contact Us**

### **Vision**

Our vision has the promise by Jesus of '**life in all its fullness**' at its heart. At St Anne's, we believe:

- in our children and each other,
- we are uniquely created in the image of God,
- we were made to be awesome,
- that together we are family,
- we were created to live in community,
- in equipping the St Anne's family to be the best we can be,
- in our individual talents and abilities, and
- we can make a difference.



**'... let your light  
Shine** before others,  
that they may see your  
good deeds and glorify  
your Father in heaven.'

**Matthew 5:16**

‘I thank you  
because I am  
**awesomely**  
made...’.

***Psalm 139:14***

‘...I come that  
they may have  
life, and have it  
**to the full.**’

***John 10:10***

### **ThisOur Values**

At **St Anne’s CE Primary School** the following core values underpin all that we do. They are reflected in the daily life of the school and our relationships with others.

- Respect
- Thankfulness
- Hope
- Forgiveness
- Love
- Faithfulness

What a wonderful week we have had in school this week! We have had many memorable experiences for our children: Young Voices concert, All Stars reward afternoon, basketball final, Change for Life

festival, year 4 local walk, forest school, clubs and the usual day to day lessons! Thank you to our awesome staff team for making these extra events happen for our pupils; it is what makes St Anne's super special.

We have reached the end of the half term which seems to have flown by. Even after just five weeks, we have achieved a lot during this time. Children's learning is progressing well and we are looking forward to sharing your child's learning with you in their mid year report at the end of February.

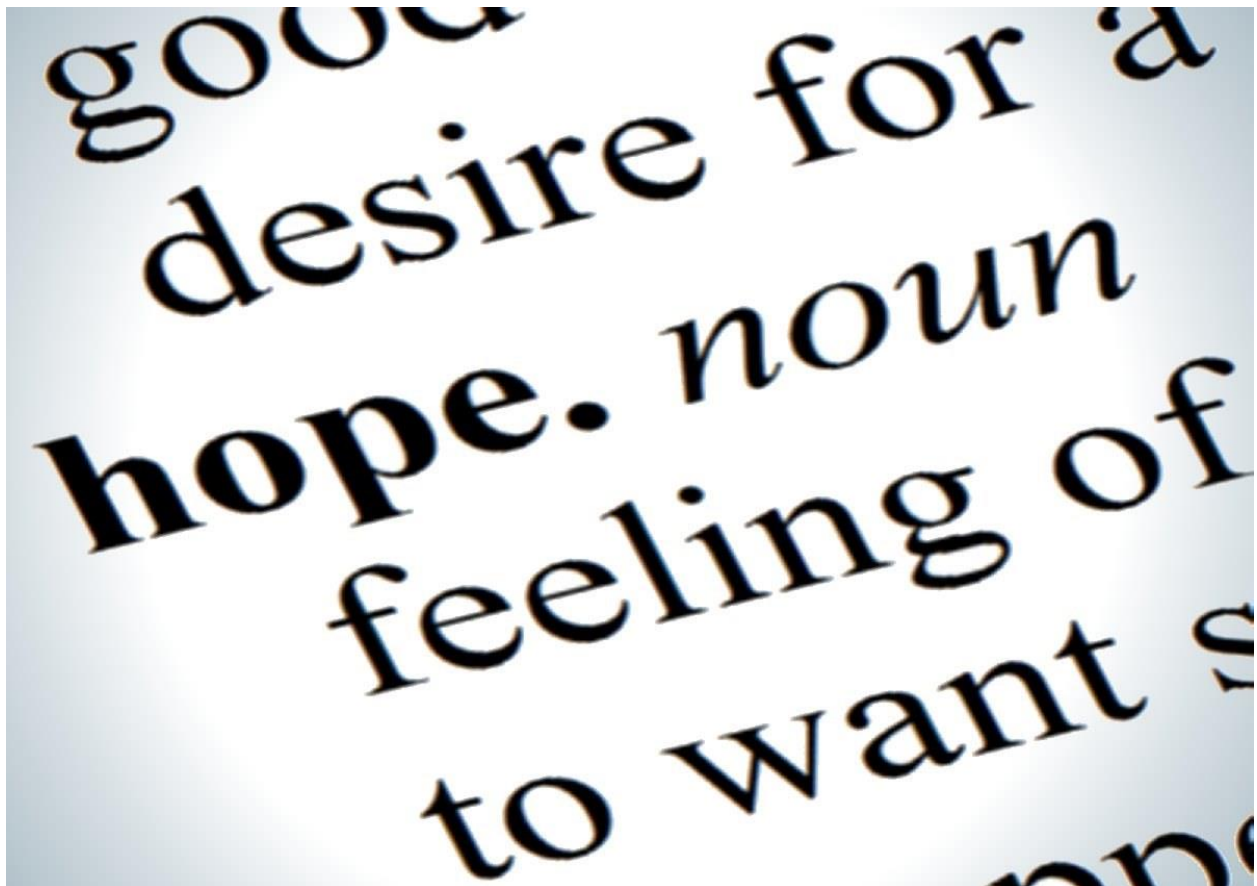
Thank you for your continued support.

Have a lovely half term.

Mrs J Webb

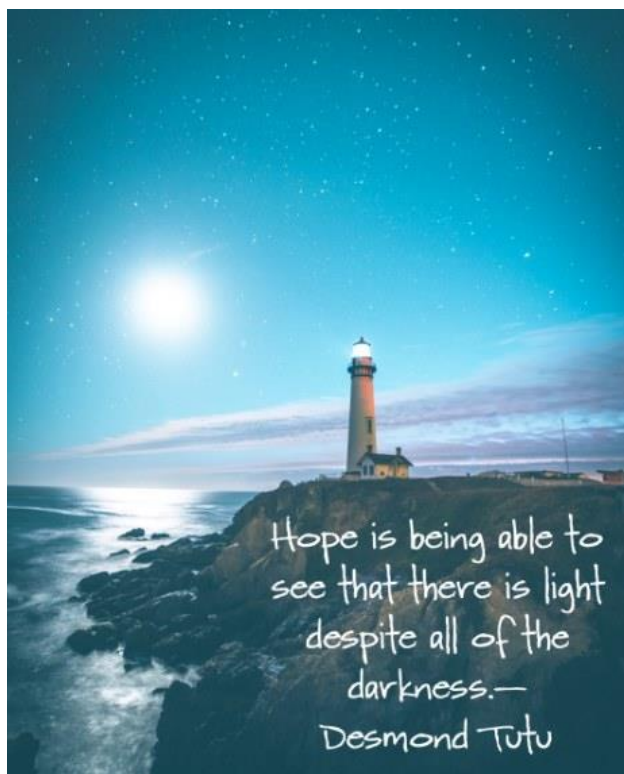
Headteacher

## Christian Value



This half term's Christian value which we are focussing on is 'Hope'.

In worship this week, children learned about lighthouses and how they can be a symbol of hope.



## Attendance and Punctuality

Our whole school aim is for classes to achieve at least **96% or above** each week to ensure all children are progressing in their learning.

We do understand that children are sometimes absent due to illness. Please continue to communicate with the school office regarding absences.

**Reception: 98%**

**Year 1: 98.1%**

**Year 2: 99.2%**

**Year 3: 90.3%**

**Year 4: 95.5%**

**Year 5: 96.5%**

**Year 6: 94%**

**Number of lates: 16**

**Whole School attendance: 95.8%**

### House Group Attendance

**Bravery: 97.5%**

**Courage: 97%**

**Loyalty: 97.1%**

**Trust: 91.9%**

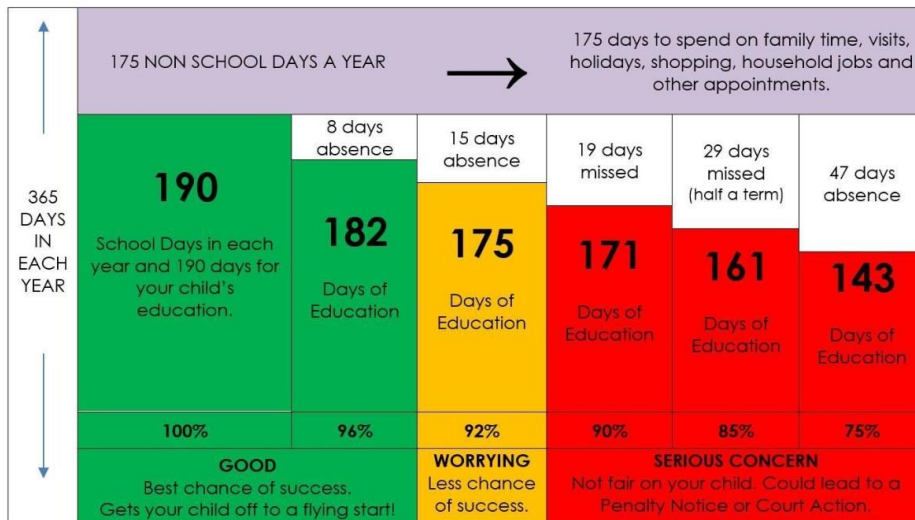
### Punctuality

Please ensure your child is in school and ready to learn **by 9:00 am**.

Our school gates are open at **8:45 am** for your child to arrive and settle into their class routines for learning to begin at 9:00 am. School gates will be locked promptly. **This is an important part of the school day and it can cause unnecessary upset when a child arrives part way through a lesson.** A 'late mark' also contributes to your child's overall attendance figure.

Breakfast club is available from 7:45 am.

See below for the impact of absence and lateness has on a pupil.



Please use the absence request form on the website or from the school office to request absences from school during term time.

<https://stannesceprimary.school/school-holidays/>

## Parking

St Anne's expects that pupils can arrive and leave school safely without the danger of an accident due to car parking.

To help keep our pupils safe, please can I politely ask you:

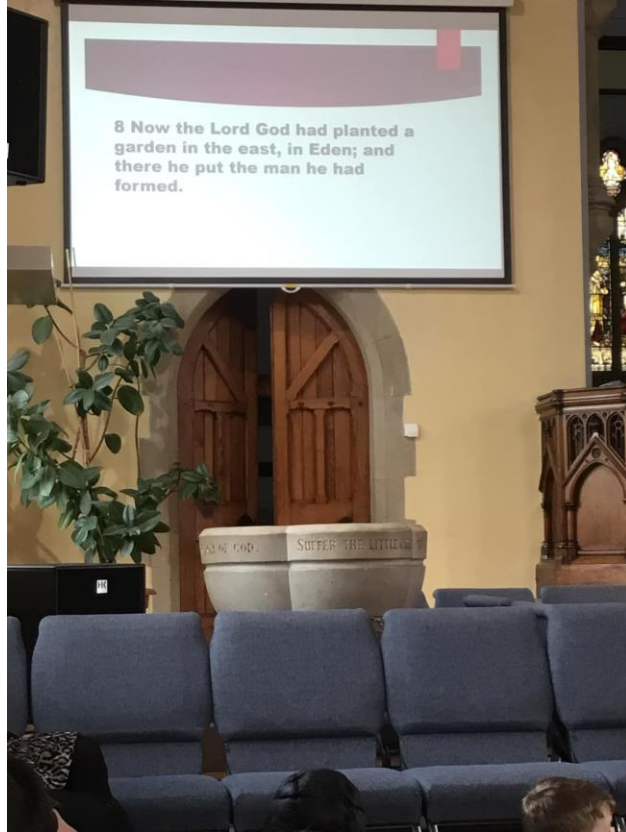
- not to park on the yellow safety lines around school,
- not to turn around in the road and reverse near pavements,
- not to park on the pavements near school where children are walking
- not to double park near the pull in laybys.

## Ash Wednesday



Ash Wednesday this year is during the half term break so we are marking the day on Wednesday 7th February. We held a special Ashing service in church led by Reverend Rod.











## Basketball News



Well done to our year 5/6 basketball team who made the final this week. They came 4th place, played really well and represented St Anne's awesomely!





## Young Voices 2024



Our school choir took part in Young Voices on Tuesday this week. They sang their hearts out at Manchester Arena! Thank you to the staff that organised and accompanied them on this memorable visit.



This week in photographs







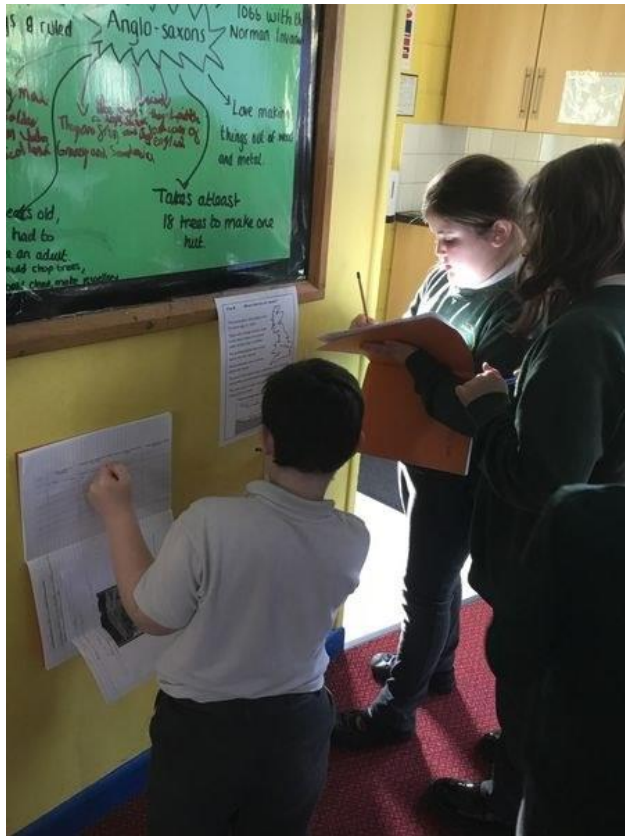


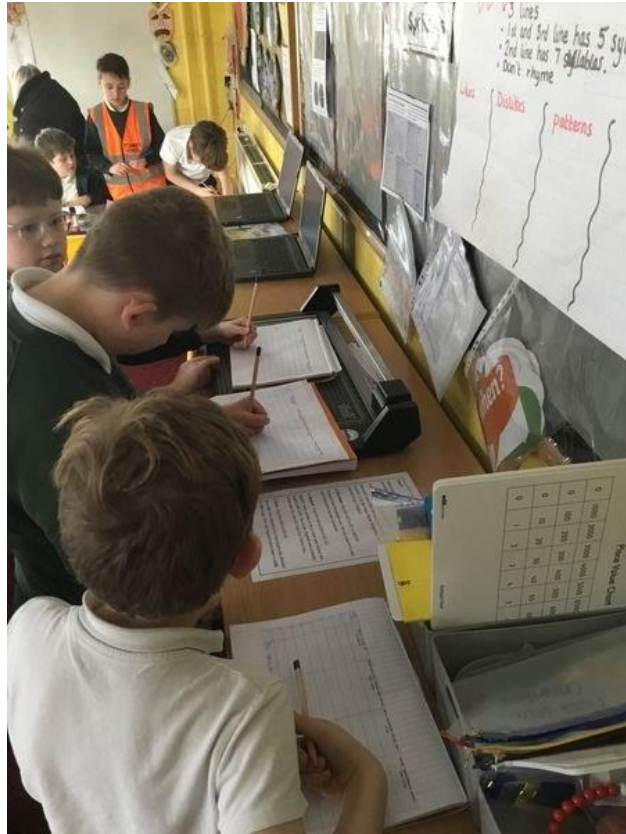




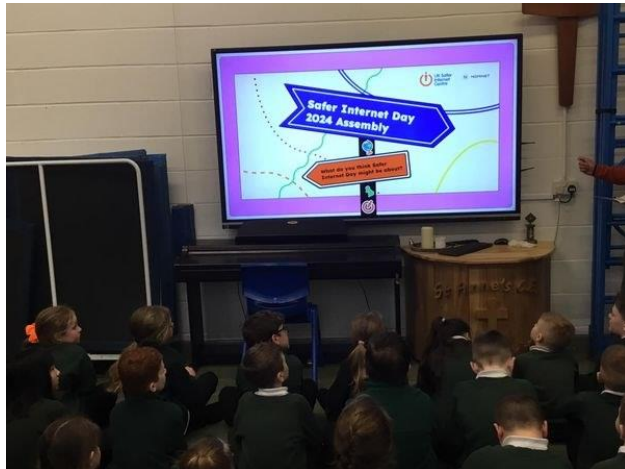




















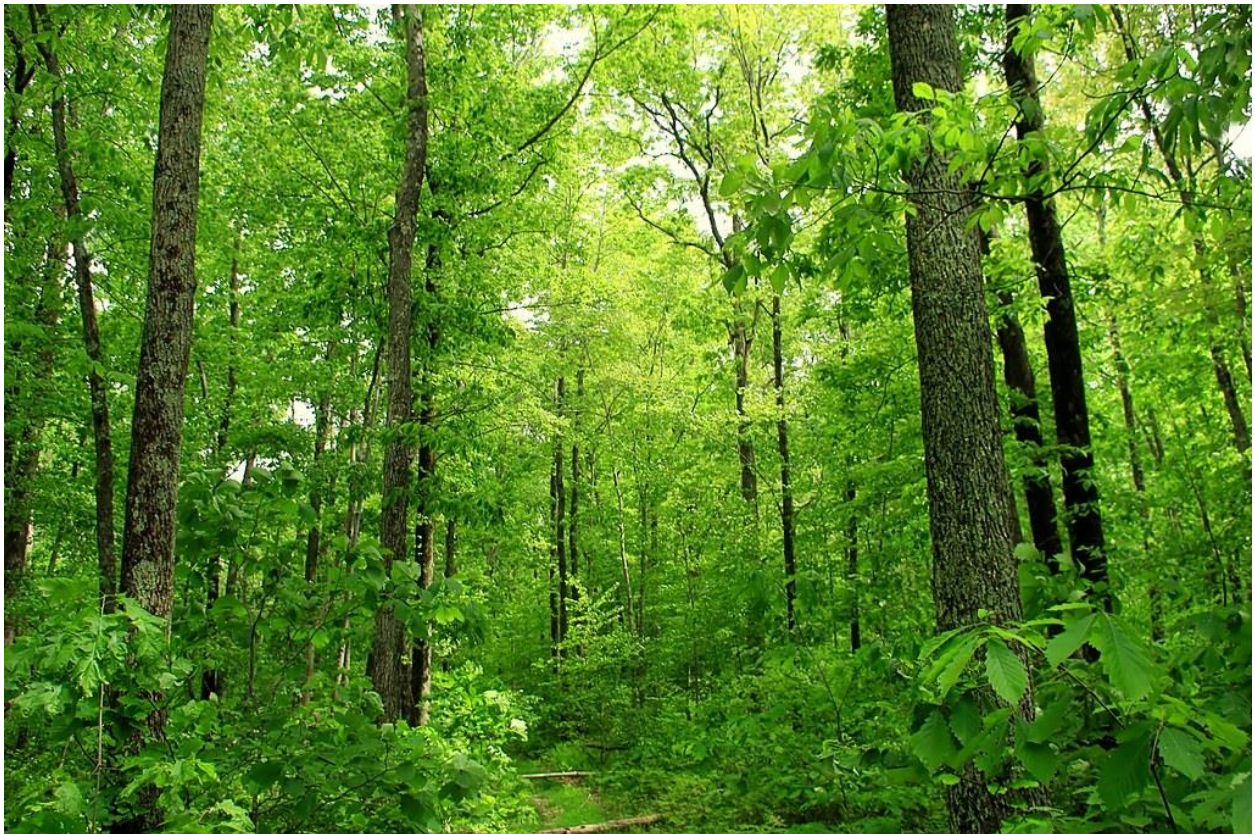








## Forest School Dates



- Year 5 21st and 28th February 2024
- Year 6 6th March 2024
- Year 2 13th March 2024

- Reception and Nursery 20th and 27th March 2024

Please ensure your child has a change of clothes they can get wet and muddy outdoors along with wellies or walking boots. A waterproof outer layer is always helpful with our unpredictable weather.

## Friends of St Anne's



# Friends of St Anne's



**Friends** is a friendly group of parents and staff who meet regularly to plan events for our children to raise funds. The funds help to enhance the school curriculum. We believe extra experiences enrich our children's experiences throughout their time at St Anne's and give them lifelong memories.

Some examples of the events we hold are: discos, Christmas and summer fairs, quiz nights, raffles.

**YOU WOULD BE MADE MOST WELCOME**

# What's On!

## FRIENDS OF ST. ANNE'S

FEB	VALENTINE DISCO	8TH
MAR	EASTER RAFFLE	28TH
MAY	DISCO	9TH
MAY	CRAZY HAIR DAY BOTTLE TOMBOLA DONATIONS	24TH
JUN	NON-UNIFORM DAY SUMMER FAIR DONATIONS / THERMOS DONATIONS	7TH
JUN	SUMMER FAIR	28TH
JUL	END OF YEAR DISCO	11TH

FRIENDS  
OF ST. ANNE'S

# COFFEE AFTERNOON

JOIN US ON THE LAST FRIDAY OF THE MONTH  
FOR A BREW AND A CHAT

1:30 UNTIL CELEBRATION WORSHIP



EVERYONE WELCOME



# Community and Family Information



Monday	Tuesday	Wednesday	Thursday	Friday
<p><b>Triple P Group</b> 9.30 - 12.30 The Maudsley Centre</p> <p><b>Infant Massage</b> 1.30 - 2.30pm The Maudsley Centre</p> <p><b>Mums Mums &amp; Babies</b> 9.30 - 11.00am The Maudsley Centre</p> <p><b>Home Start Group</b> 1.00 - 2.30pm The Maudsley Centre</p> <p><b>Freedom for Children</b> For details about programmes running please email: <a href="mailto:freedomforchildren@maudsleycentre.gov.uk">freedomforchildren@maudsleycentre.gov.uk</a></p> <p><b>Inside Out</b> 9.30 - 10am The Maudsley Centre</p> <p><b>Post Natal Wellbeing drop in</b> 1.00 - 2.30pm Huntingdon Link</p>	<p><b>Cultural Festivals (Pneumonia)</b> 9.30 - 11.00pm The Maudsley Centre</p> <p><b>Home Start Group</b> 10.00 - 11.30am Huntingdon Link</p> <p><b>Inside Out</b> 9.30 - 10am Huntingdon Link</p> <p><b>Chat Play Read</b> 1.00 - 2.30pm Huntingdon Link</p> <p><b>Home Start</b> 1.00 - 2.30pm AB&amp;D Centre</p> 	<p><b>Freedom Programme</b> For details about programmes running please email: <a href="mailto:freedomforchildren@maudsleycentre.gov.uk">freedomforchildren@maudsleycentre.gov.uk</a></p> <p><b>Developmental Milestones</b> 10.00 - 11.30am Whitworth Library</p> 	<p><b>One Stop Shop</b> 10 - 12pm The Maudsley Centre</p> <p><b>Parents to Be</b> 10.00 - 11.30am The Maudsley Centre</p> <p><b>Developmental Milestones</b> 9.30 - 10.00am Huntingdon Link</p> <p><b>Bubs &amp; Tots</b> 10.00 - 11.30 The Maudsley Centre</p> <p><b>Cultural Festivals (D&amp;D Arts)</b> 9.30 - 10.00pm The Maudsley Centre</p> <p><b>Triple P Shoppinglist</b> 9.30 - 10.00pm The Maudsley Centre</p> <p><b>Support Skills and Reports (1.00 - 4.00)</b> 1.00 - 4.00pm, The Maudsley Centre</p> <p><b>Speech and Language Walk in</b> 11.30am of every month 10.30 - 11.00am, The Maudsley Centre</p>	





Rossendale Children and Family Wellbeing Service presents



# Valentine's Family Fun

Valentines themed arts and crafts  
Face painting  
Games  
Free Hotdogs for the children



Maden Family Hub, Bacup OL13 9NZ

Wednesday 14 | FEBRUARY | 10-12pm

The Zone, Old Fire Station, Rawtenstall BB4 8EW

Thursday 15 | FEBRUARY | 1-3pm

 [facebook.com/RossendaleFamilyZone](https://facebook.com/RossendaleFamilyZone)

[lancashire.gov.uk](http://lancashire.gov.uk)





The Maden Family Hub



# ONE STOP SHOP

Drop in and find out how we can support you.



Support with Funded Childcare for 2, 3 and 4 year olds.



Extra money available. Come and check if you're eligible.

One Stop Shop is available for you to drop in between 10am and 12 noon every Thursday at The Maden Family Hub, Rochdale Road, Bacup OL13 9NZ.

Maden Family Hub – 01706 237 780

[lancashire.gov.uk](http://lancashire.gov.uk)



<https://stannesceprimary.school/early-help-offer/>

## Diary dates



Friday 9th February 2024

Celebration worship in classes not in church

**Friday 9th February 2024**

**School Closes for Half Term**

**Monday 19th February 2024**

**School Opens**

Monday 9th February 2024

New extra curricular club timetable begins

Wednesday 21st February 2024

Year 6 Victorian Day. Dress up optional.

Thursday 29th February 2024

Mid Year reports go home

Thursday 29th February 2024

Dance Competition

Wednesday 6th March 2024

Parent Consultation Evening

Thursday 7th March 2024  
character.

World Book Day. Optional dress up as a book

**Thursday 28th March 2024**

**School closes for the Easter break**

**Monday 15th April 2024**

**School opens**

# St Anne's Church

Welcome to St Anne's Church Edgeside

---



**St Anne's Church** is made up of an active group of people who love God and want to serve our Community. Our services are modern and informal and we love to get everyone involved.

All ages have a part to play at **St Anne's Church** and there are groups and activities for everyone, and because Church is not just about Sunday, there are lots of activities going on throughout the week. ***Why not join us and get involved?***

Please see St Anne's church website for all the latest events and information.

<https://stannesedgeside.co.uk/>



## Weekly Awards



Class captains: Archie S, Oscar H, Paige, Olivia H, Evie B, Evie K, Esmai

Top Table: Dylanah, Zachary, Sam, Lincoln, Penny, Neveah, Esmai

OPAL awards: Esmee, Toby G

Breakfast Club: Daniel B

After School Club: Isaac P

## House Points



Download from  
**Dreamstime.com**

This watermarked comp image is for previewing purposes only.

ID 20471736

© Mariaam | Dreamstime.com

Loyalty: 1915

Courage: 2355

Trust: 1660

Bravery: 1695

House of Courage were this half term's winning house. Congratulations to each member!

## Contact Us



There are various ways you can contact us in school and keep up to date with school life.

- Please use our school email address [office@st-anne-edgeside.lancs.sch.uk](mailto:office@st-anne-edgeside.lancs.sch.uk)
- You can call us on: 01706 214081
- Speak to your child's class teacher at drop off or hand over times
- Our school Facebook page has events and photographs of our children:  
<https://www.facebook.com/stannescofeprimaryschool>
- And please visit our school,website for more information about out school:  
<https://stannesceprimary.school/>